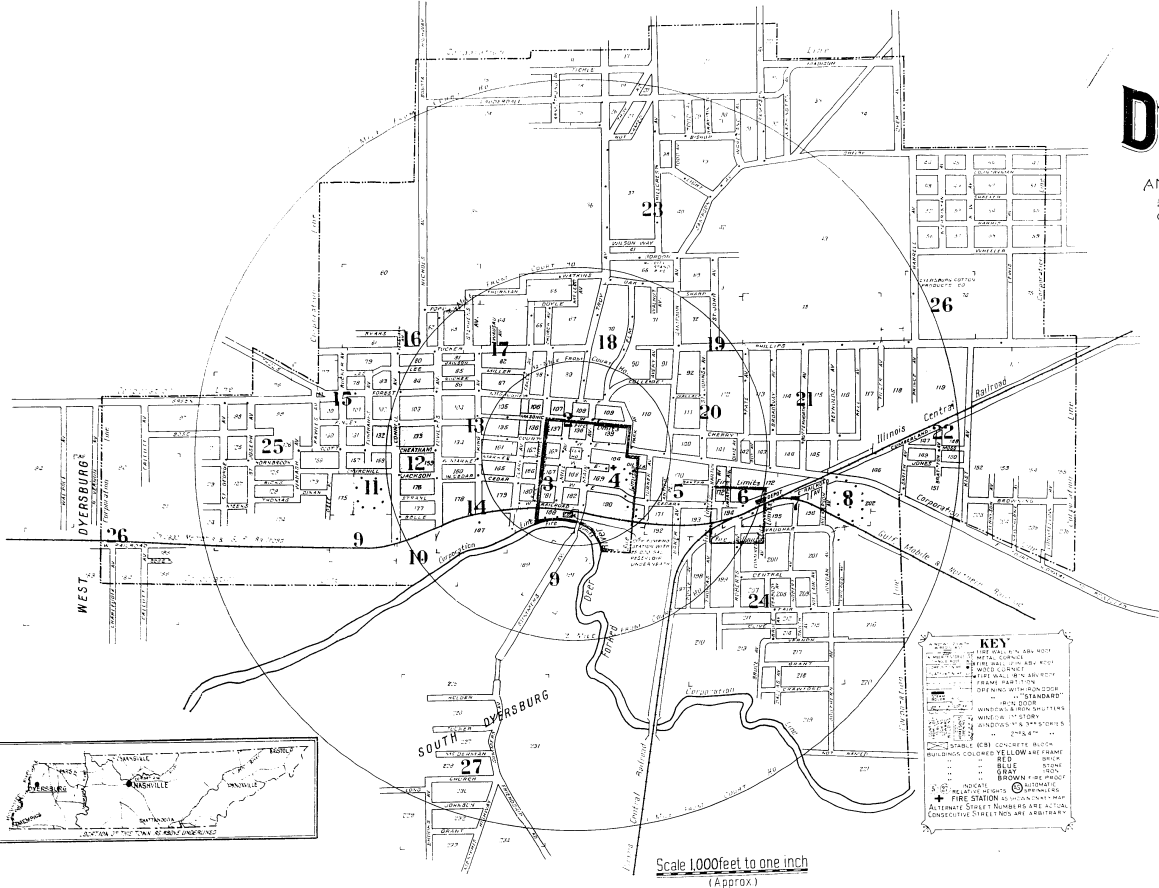


DYERSBURG

Including
SOUTH DYERSBURG
AND WEST DYERSBURG
DYER COUNTY
TENNESSEE

Sansboro Map Co. New York
January, 1929

Copyright 1929 by the Sansboro Map Co.



Scale 1,000 feet to one inch (Approx.)

POPULATION 12,000
Prevailing Winds: Southwest.
GRADES: Rolling. 10 miles of paved streets.
PUBLIC LIGHTS: Electric.

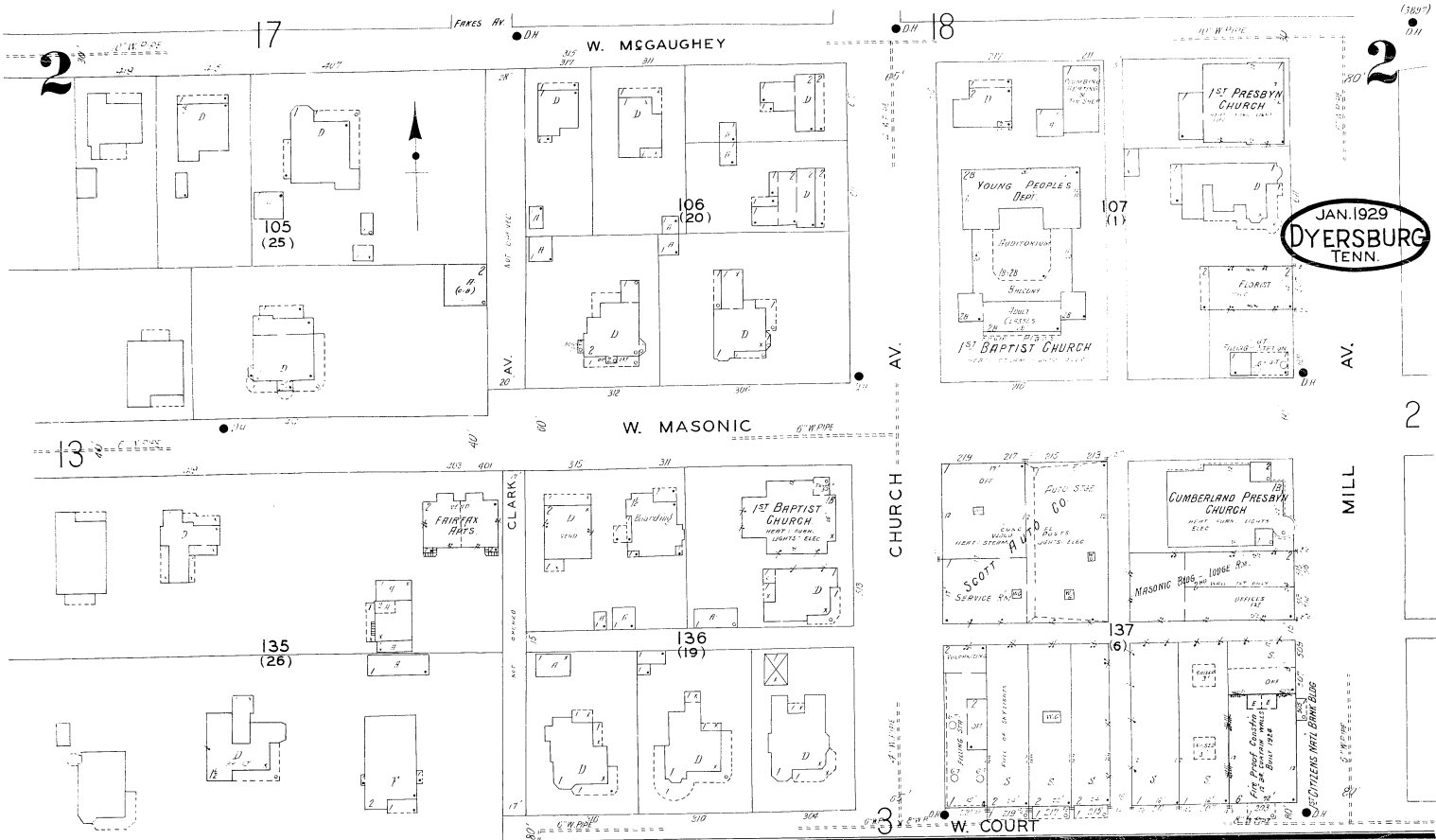
WATER FACILITIES
Water Works, owned and operated by city. Gravity and direct pressure system of water works. Water is pumped from 3 deep wells into 85,000 gallon reservoir by 1 Low-down well centrifugal pump and 1 air compressor, thence is pumped into 255,000 gallon standpipe, half a mile from Public Square, elevated 120' above same, by one 1,000 gallon per minute Worthington centrifugal pump, 1 Worthington 500 gallon per minute centrifugal pump, 1 Platt Underwriters' pump, capacity 500 gallons per minute and 1 Worthington compound, duplex, steam pump, capacity 500 gallons per minute.
About 20 miles of 1, 1 1/2, 8, 10 and 12" mains. 143 hydrants. Average pressure 50 lbs. Average daily consumption 520,000 gallons.

FIRE DEPARTMENT
4 fully paid men, including chief, 11 volunteers. 1 fire station, fully motorized.
1 American LaFrance hook and ladder truck, Type 75, triple combination, with 500 gallon jumper and carrying 1,500' 2 1/2" hose. 1 American LaFrance hook and ladder truck, Type 145, quadruple combination with 500 gallon jumper and carrying 1,000' 2 1/2" hose, 40 gallon chemical tank, 200' chemical hose. 1 Graham Paige, equipped with 4 chemical extinguishers for chief's use. 4,700' hose in good condition. Fire alarm is given by wildcat steam whistle at pumping station.

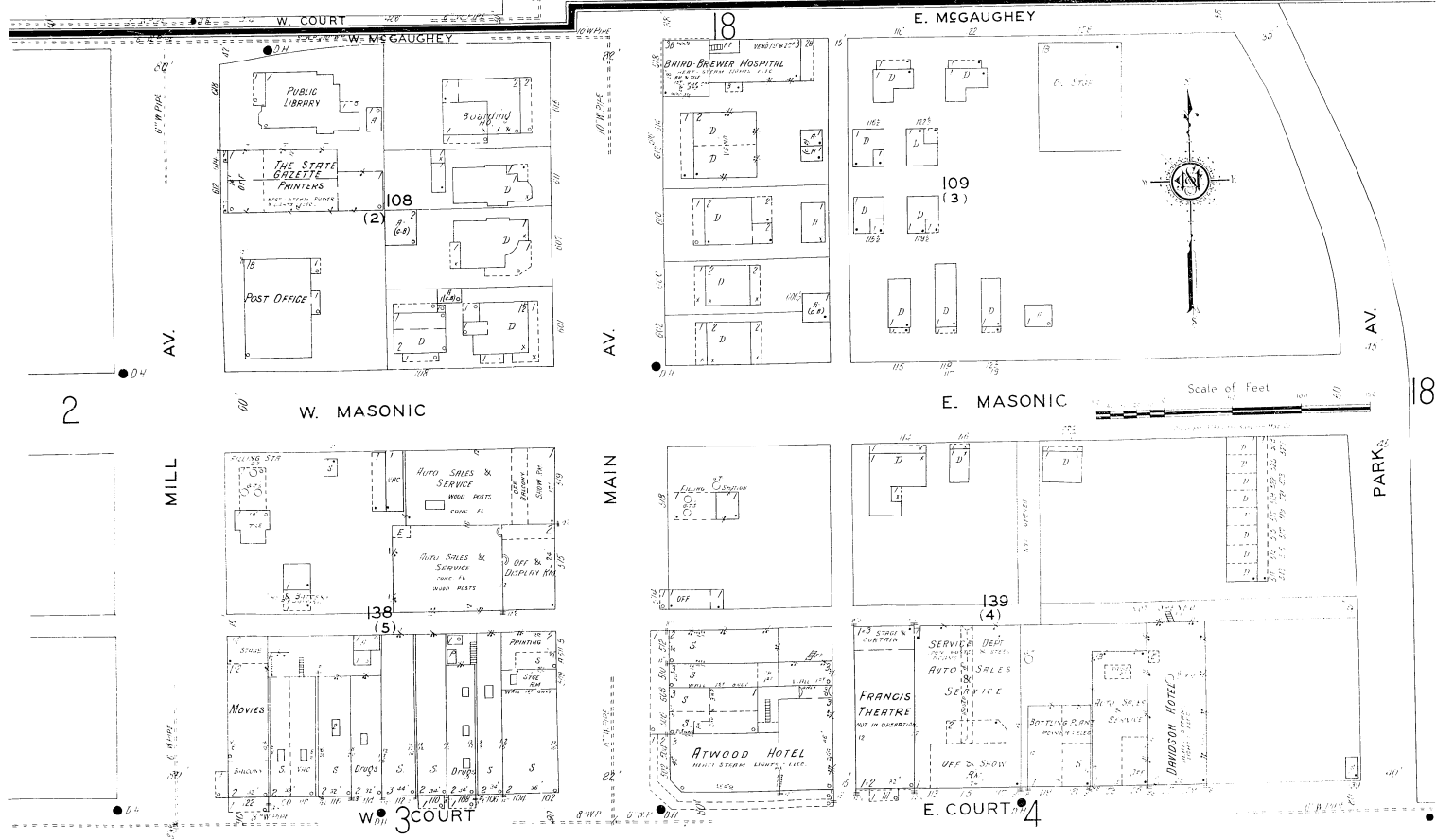
FIRE-RESISTIVE ROOFING ORDINANCE
Ordinance adopted May 6th, 1926.
All buildings having in excess a foundation base of more than 200 square feet to be covered with non-combustible roofing material. Roofing repairs of 50' and over not allowed.

INDEX

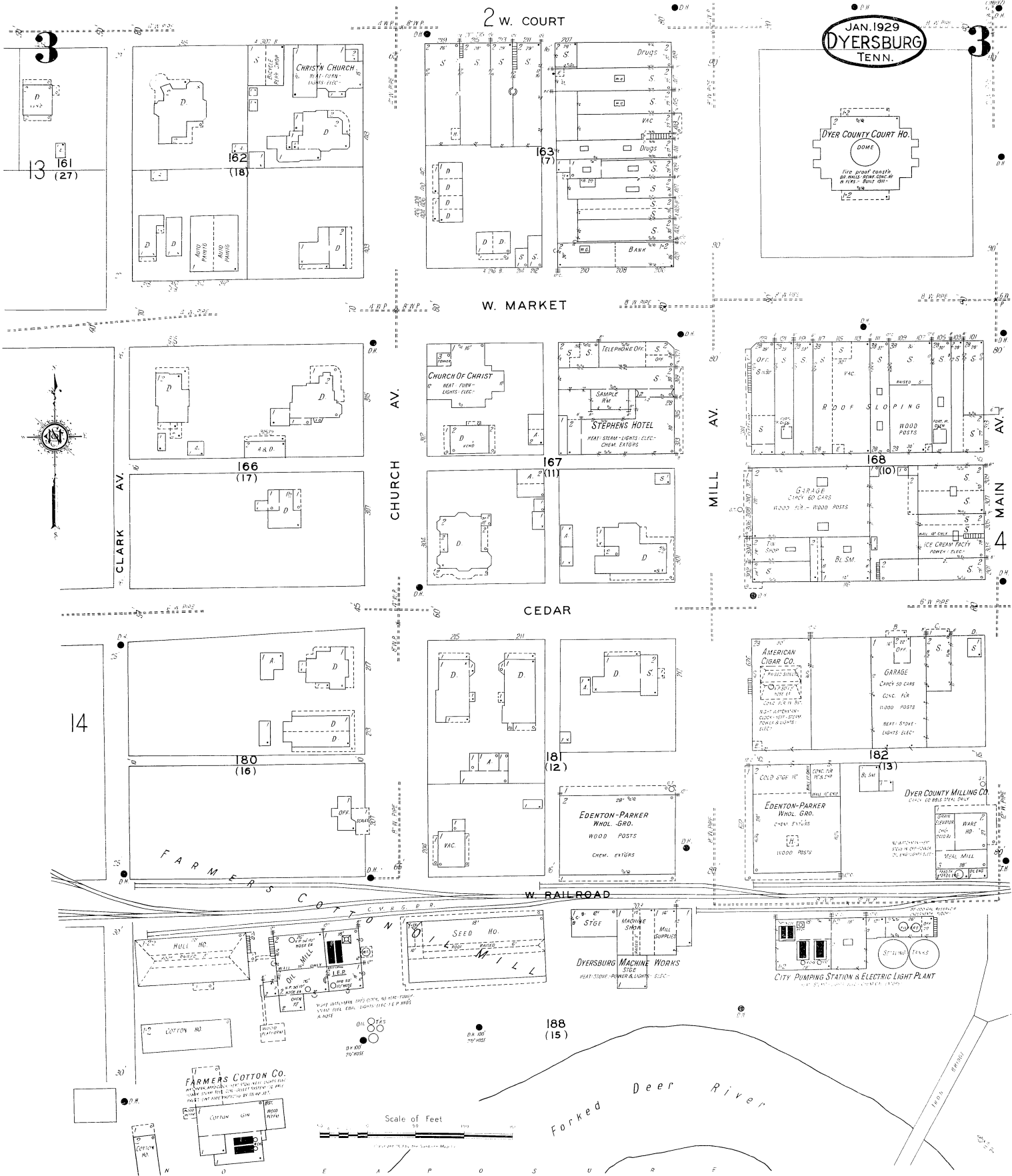
STREETS		SPECIALS	
Antigo Place, A	5	Wallace	20
Avery Ave., 18		Walnut Ave., 24	
Baker Ave., B	5	Walpole Ave., at West Dyersburg, 25	
Baxter, 5		Watkins, 6	
Bell Ave., 10		Wausau Ave., 15	
Belle, 10		Wilson Way, 25	
Bishop, 20			
Bose, 25			
Bratton Place, 22			
Brayton Ave., 23			
Broadway Ave., 500-525			
Brooks Ave., at South Dyersburg, 27			
Browning, 27			
Bruce Ave., 21			
Butterworth Ave., 7, 8 & 21			
Byars, 16			
Calais Ave., at West Dyersburg, see N. Vernon Ave.			
Calcutt Ave., 26			
Cedar E., 300-437			
W., 100-319			
Central, 600-750			
Charlevoix Ave., 26			
Chestnut, 600-645			
Cherry, 604-914			
Church Ave., at South Dyersburg, 27			
Churchill, 11 & 25			
Clark Ave., 2, 3 & 14			
College, 18			
Compress Ave., 100-224			
Connell Ave., 101-115			
201-225			
300-430			
600-825			
109-224			
101-132			
201-319			
300-604			
627-805			
702-808			
1000-1125			
100-414			
101-409			
303-221			
411-415			
Cumberland, D	416-441	22	
Dallas Ave., D			
Dawson, 16 & 23			
Depot, see E. Cedar			
Dinan (arbitrary), 95			
Dixie Ave., 500-524			
Doyle, 501-525			
Doyle, 24			
Elison, see Fumbanks Ave.			
Elm Ave., 16			
Fair, 500-829			
Fakes Ave., 700-954			
Ferguson Ave., 500-535			
Finley, 600-728			
601-729			
800-925			
Forest, 100-314			
Fowles Ave., 101-115			
Gordon, 201-325			
Grant, 1100-1301			
Green, 900-927			
Harrell Ave., H	22 & 26		
Hartson Ave., 301-416			
Hawthorne Ave., 600-825			
Hillcrest Ave., 10 & 22			
Hinton Ave., 10 & 22			
Robert Ave., 10 & 24			
Hooden, at South Dyersburg, 27			
Hornbrook, 1100-1301			
Jackson, 600-630			
Johnson, at South Dyersburg, 27			
Jones, 1100-1229			
Jordan Ave., 24			
King Ave., K	300-325	14	
King Ave., 304-415		13	
King Ave., 700-814		17	
King Ave., 701-815		22	
Kist Ave., L			
Latta, see Church Ave.			
Lea, 15 & 16			
Liberty Ave., 23			
Light, 23			
Long, at South Dyersburg, 23			
Long, at South Dyersburg, 18			
Lucas, 11, 15, 16 & 23			
McDerman, at South Dyersburg, 27			
McGaughy, E., 100-134			
101-135			
100-318			
101-415			
400-444			
417-535			
500-534			
100-134			
101-135			
100-318			
101-415			
400-444			
417-535			
500-534			
18 & 23			
201-425			
500-619			
100-125			
100-319			
401-535			
418-549			
100-215			
420-449			
200-419			
500-619			
400-449			
1100-1225			
900-1035			
18 & 23			
100-125			
100-215			
400-449			
500-619			
400-449			
1100-1225			
2 & 18			
600-825			
601-717			
719-835			
400-619			
200-315			
400-619			
616-959			
1000-1067			
1028-1124			
100-125			
600-825			
601-717			
719-835			
400-619			
200-315			
400-619			
616-959			
1000-1067			
1028-1124			
100-125			
600-825			
601-717			
719-835			
400-619			
200-315			
400-619			
616-959			
1000-1067			
1028-1124			
100-125			
600-825			
601-717			
719-835			
400-619			
200-315			
400-619			
616-959			
1000-1067			
1028-1124			
100-125			
600-825			
601-717			
719-835			
400-619			
200-315			
400-619			
616-959			
1000-1067			
1028-1124			
100-125			
600-825			
601-717			
719-835			
400-619			
200-315			
400-619			
616-959			
1000-1067			
1028-1124			
100-125			
600-825			
601-717			
719-835			
400-619			
200-315			
400-619			
616-959			
1000-1067			
1028-1124			
100-125			
600-825			
601-717			
719-835			
400-619			
200-315			
400-619			
616-959			
1000-1067			
1028-1124			
100-125			
600-825			
601-717			
719-835			
400-619			
200-315			
400-619			
616-959			
1000-1067			
1028-1124			
100-125			
600-825			
601-717			
719-835			
400-619			
200-315			
400-619			
616-959			
1000-1067			
1028-1124			
100-125			
600-825			
601-717			
719-835			
400-619			
200-315			
400-619			
616-959			
1000-1067			
1028-1124			
100-125			
600-825			
601-717			
719-835			
400-619			
200-315			
400-619			
616-959			
1000-1067			
1028-1124			
100-125			
600-825			
601-717			
719-835			
400-619			
200-315			
400-619			
616-959			
1000-1067			
1028-1124			
100-125			
600-825			
601-717			
719-835			
400-619			
200-315			
400-619			
616-959			
1000-1067			
1028-1124			
100-125			
600-825			
601-717			
719-835			
400-619			
200-315			
400-619			
616-959			
1000-1067			
1028-1124			
100-125			
600-825			
601-717			
719-835			
400-619			
200-315			
400-619			
616-959			
1000-1067			
1028-1124			
100-125			
600-825			
601-717			
719-835			
400-619			
200-315			
400-619			
616-959			
1000-1067			
1028-1124			
100-125			
600-825			
601-717			
719-835			
400-619			
200-315			
400-619			
616-959			
1000-1067			
1028-1124			
100-125			
600-825			
601-717			
719-835			
400-619			



JAN. 1929
 DYERSBURG
 TENN.



Scale of Feet



JAN. 1929
DYERSBURG
 TENN.

DYER COUNTY COURT HO.
 DOME
 THE COURT HOUSE IS BUILT FROM CONC. BY W. H. BENTLEY

2 W. COURT

W. MARKET

CEDAR

W. RAILROAD

CLARK AV.

CHURCH AV.

MILL AV.

MAIN AV.

FARMERS

188 (15)

DYERSBURG MACH. WORKS
 HEAT, STEAM, POWER & LIGHTS, ELEC.

CITY PUMPING STATION & ELECTRIC LIGHT PLANT
 HEAT, STEAM, POWER & LIGHTS, ELEC.

FARMERS COTTON CO.
 COTTON GIN
 WOOD SHED

Scale of Feet

Forked Deer River

